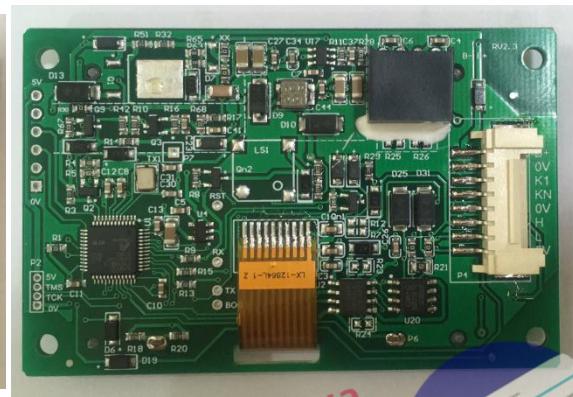
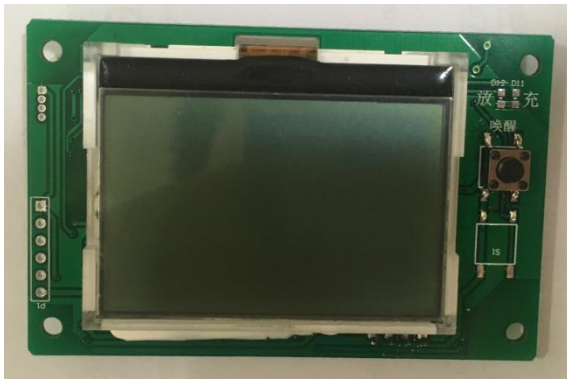


Product Spec



NO.: ANT12864_TTL_N

ANT12864_C_N



lgx.com.ua



lgx.com.ua

Document No.: V1.0

Date: 20190610

1. Product Introduction

1.1 Scope

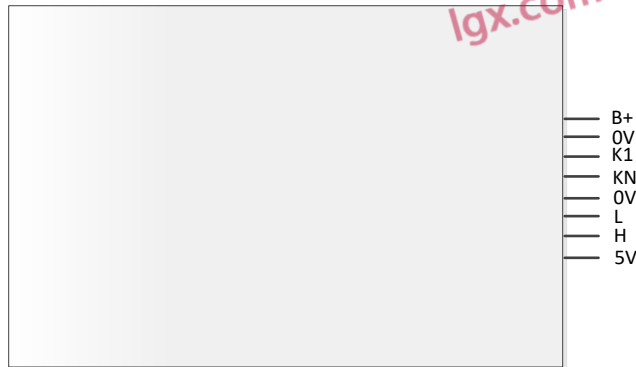
ANT12864_TTL_N is a display used with BMS. It uses 12864 dot matrix unit to communicate with BMS (Via TTL). It displays battery voltage, current, soc, cell voltage, temperature and other information.

Note: ANT12864_C_N is a version with CAN interface.

1.2 Technical Features

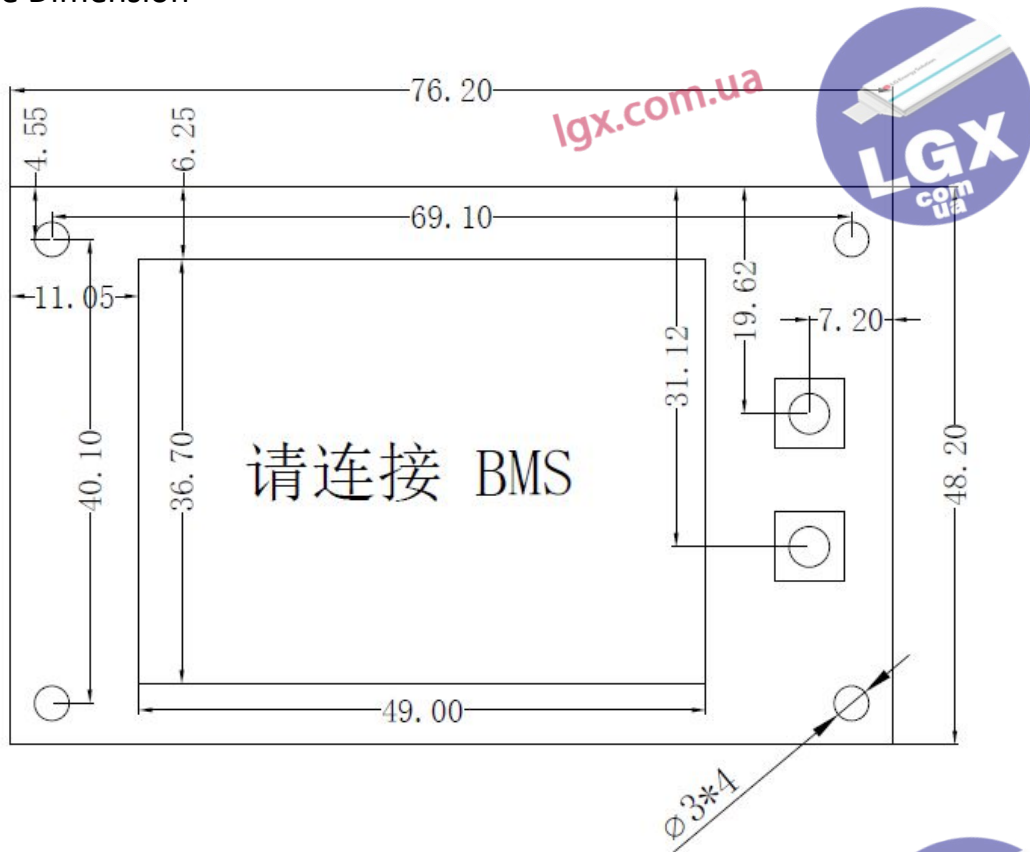
No.	Items	Description	Remark
1	Power Supply method	Form battery pack, 20-100V DC input	Auto Shut down enable
2	Power Consumption	< 5mA (60V)	
3	OSD	1channel	
4	Operating Temperature	-40 ~ 85 °C	
5	Storage Temperature	-40 ~ 95 °C	
6	Operating Humidity	5% ~ 95%	
7	TTL Interface	1channel	2 choose 1
8	CAN Interface	1 channel	2 choose 1
9	Isolation level	IP30	
10	Weight	< 40g	
11	Mainboard Dimension	76.2*48.2*16mm	With Screw Hole

2. Interface Pin Define



Pin	Define	Pin	Define
B+	Power input +	0V	Signal Output 0V
0V	Power input -	L	RX(CANH)
K1	Page Shift	H	TX(CANL)
KN	NA	5V	Signal Output 5V

3. Reference Dimension



lgx.com.ua



lgx.com.ua